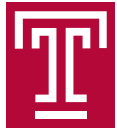




ACCESS *to* EXCELLENCE

The 125th Anniversary Campaign for Temple University | Report on Success

THE MEMBERS OF THE TEMPLE UNIVERSITY COMMUNITY SET THEIR SIGHTS HIGH. THEY EMBRACE DIVERSE PERSPECTIVES AND OPINIONS. THEY INNOVATE AND EXPLORE NEW IDEAS. WORKING TOGETHER, THEY RISE ABOVE OBSTACLES AND REACH ACROSS BOUNDARIES TO TAKE ON TODAY'S TOUGHEST CHALLENGES.



People are drawn to Temple to teach, learn, create and make a difference in the lives of others. To ensure Temple's ability to support these endeavors and to foster their growth long-term, the university launched *Access to Excellence: The 125th Anniversary Campaign for Temple* in 2002.

Through its first universitywide fundraising effort, Temple set out to build substantial financial support for student scholarships, facilities, research, faculty and community initiatives. The *Access to Excellence* campaign goals were ambitious, and we knew it would succeed only if everyone joined the effort.

Today, *Access to Excellence* is an unprecedented success. Alumni and other supporters invested more than \$380 million in Temple, well beyond the campaign's initial \$300 million goal and even the revised \$350 million goal. As a result, new scholarships and additional faculty funding mean Temple can attract the most promising students and the most talented professors; Temple's outreach programs will continue to grow stronger, with partnerships that extend far beyond the neighborhoods surrounding its campuses and around the world; and Temple faculty and students will transform ideas into practical solutions to society's most pressing problems. Equally important, the campaign has created a new culture of philanthropy and engagement throughout the Temple community, which is vital for the ongoing growth of the university.

Temple is a
vibrant community
where people
and ideas flourish.



Access to Excellence
Campaign Total
\$380.4 MILLION





“The incredible support the campaign inspired means Temple can provide students and faculty with the resources to excel in every field, on every campus and in every classroom.”

Leonard Barrack, SBM '65, LAW '68
University Trustee
Chair, Access to Excellence Campaign

The *Access to Excellence* campaign is a remarkable achievement, and Temple will utilize the momentum of our success to raise our sights even higher in the years ahead. With clear academic priorities, Temple will continue to enrich the curriculum, its research enterprise and its service to Philadelphia, the Commonwealth of Pennsylvania and the world. A thoughtful study of our academic needs has resulted in a campus development framework titled Temple 20/20 that will guide our efforts to revitalize our Main Campus and the North Broad Street corridor.

Temple will always be a place where ideas and people flourish and where innovation emerges to transform society. I am deeply grateful for the generosity of all who supported the *Access to Excellence* campaign and I look forward to our continued work together on behalf of Temple University.



ANN WEAVER HART
PRESIDENT, TEMPLE UNIVERSITY

AT TEMPLE UNIVERSITY, STUDENTS AND FACULTY THRIVE IN AN OUTSTANDING INTELLECTUAL ENVIRONMENT THAT FOSTERS INDEPENDENT THINKING, CREATIVE EXPRESSION AND LEADERSHIP. IN THE CLASSROOM AND OTHER SETTINGS, STUDENTS WORK CLOSELY WITH PEERS AND PROFESSORS TO HONE THEIR CRITICAL THINKING SKILLS. TEMPLE FACULTY MEMBERS—DEDICATED TO TEACHING, INQUIRY AND EXPLORATION—COLLABORATE ACROSS ACADEMIC DEPARTMENTS AND WITH PARTNERS OFF CAMPUS. THEY INSPIRE STUDENTS TO PURSUE THEIR ACADEMIC AND CAREER GOALS.

Motivated to succeed, Temple students embrace opportunities to learn and grow beyond the lecture hall. They take part in entrepreneurship competitions at the Fox School of Business, hands-on learning in the Health Scholars Program and hundreds of other experiences to expand knowledge, boost skills and forge stronger relationships.

Funded through a million-dollar-plus gift to *Access to Excellence*, the university's TUteach initiative encourages Temple's brightest science and technology students to become certified as math or science teachers by offering a special curriculum in the College of Education. The goal is to enhance science and mathematics education, especially at the middle and high school levels, so that the nation will produce a workforce that can better compete in the global economy.

Temple empowers students and faculty to seek new **opportunities** and expand horizons.



New Endowed Funds
429





“Temple always looks to broaden the scope of community initiatives, build more fruitful relationships with local partners in Pennsylvania and tap into the expertise of neighbors from across the Philadelphia region.”

Daniel H. Polett
Trustee

For many students, financial support is the key that provides access to Temple’s diverse and challenging curriculum. Since the campaign’s start in 2002, more than 300 need- and merit-based scholarships have been established with *Access to Excellence* campaign funds. For example, the Maurice H. Kornberg Scholarship, established with the largest ever gift to the Dental School, supports outstanding students who lack the necessary financial resources to attend.

New need- and merit-based scholarship support draws exceptional, motivated students to Temple. As a result, the quality of Temple students continues to improve. The Class of 2013 has an average SAT score of 1110. That is an all-time high at the university, 94 points higher than the national average and 116 points higher than the Pennsylvania average. In addition, the number of students qualifying for the university’s Honors Program reached an all-time high in 2009.

The world’s top scholars also want to be a part of Temple’s vibrant learning community. To attract and retain a new generation of talented professors, *Access to Excellence* secured more than \$20 million for endowed professorships, chairs and other faculty support. These resources have been critical to Temple’s faculty development. Between 2003 and 2009, Temple

hired nearly 400 scholars from leading academic and research institutions around the world. For example, Francis Ward, a renowned scholar, was attracted to Temple’s tradition of excellence in teaching and clinical care. But what ultimately brought Ward to Temple in 2008 was the opportunity to be the first David R. Devereaux Chair in Nursing in the College of Health Professions and Social Work.

Once faculty members arrive at Temple, *Access to Excellence* funds enable them to conduct cancer research, investigate juvenile justice issues or work with local communities on stormwater management. Temple professors then bring that real-world expertise into every classroom.

The university is committed to further enhancing its intellectual environment by maintaining class size at current levels, improving student support services, promoting faculty training and developing other strategies that improve learning. Going forward, teaching and learning at Temple will reach higher levels of achievement. Temple students and faculty members will have a strategic framework and the additional resources to excel in the classroom, on campus and beyond.

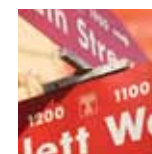
TEMPLE'S COMMITMENT TO EDUCATION AND IMPROVING LIVES GOES BEYOND ITS CAMPUSES, EXTENDING INTO NEIGHBORHOODS AND COMMUNITIES ACROSS THE PHILADELPHIA REGION AND THROUGHOUT PENNSYLVANIA. FACULTY AND STUDENTS BUILD STRONG, PRODUCTIVE RELATIONSHIPS WITH LOCAL PARTNERS BY SHARING KNOWLEDGE AND EXPERIENCE.

This exchange between campus and community—in many instances supported by *Access to Excellence* funding—means Temple is firmly grounded in the concerns and aspirations of local residents. Established in 2008, a campuswide day of service, FreshServe, now begins each academic year for the Temple community. Students can then sign on for more than 300 Temple-sponsored volunteer and service-learning opportunities, many of them chances to test academic theory against real-world practice.

Through *Access to Excellence*, more than \$22 million was raised to support community engagement initiatives that touch the lives of countless people. Campaign funds augment the Music Preparatory and Enrichment Program, the Boyer College of Music and Dance's national model for developing children's potential in music. Several major gifts support the work of Temple's Intergenerational Center in the College of Health Professions and Social Work, helping to reinvent retirement by inspiring baby boomers and retirees to pursue volunteer opportunities.

The multidisciplinary research team from Temple's Center for Sustainable Communities used *Access to Excellence* funds to determine new regional floodplain boundaries with the aid of sophisticated hydrologic

Temple shares powerful **connections** with the local community and the state.



Campaign and Alumni Events
50,000 PARTICIPANTS





“Through international teaching, research and outreach, Temple University is a global university preparing the next generation to succeed in a dynamic and interconnected world.”

Patrick J. O'Connor
Chair, Board of Trustees

modeling and geographic information systems. The detailed maps and the rigorous science behind their creation set new standards in floodplain mapping, according to the Federal Emergency Management Agency. In 2009, a gift from the Philadelphia Jewish Archives Center brought one of the country’s most extensive and varied documentations of a Jewish community to Temple University Libraries, helping to keep local history alive for future generations of students and scholars.

Temple’s community influence already is wide-ranging. The university is a leading employer in Philadelphia, and its economic impact in Pennsylvania is valued at more than \$3.2 billion per year. With new Main Campus facilities connected by a light-filled atrium completed in 2009, the Tyler School of Art and the Boyer College of Music and Dance are establishing stronger connections with the local arts communities. The Baptist Temple on North Broad Street, renovated with the help of *Access to Excellence* funds and now an extraordinary performance and event venue, serves both the university and region and will attract thousands

of people to Main Campus. Since the campaign was launched in 2002, these and other Temple infrastructure enhancements have helped attract more than \$200 million in private residential and retail investment to North Philadelphia.

Looking ahead, Temple seeks to broaden the scope of service initiatives and build more fruitful relationships with local partners. Working with organizations across the city and suburbs, the university will continue to enhance the region’s unique historic, physical and cultural assets. More opportunities for students and faculty to collaborate with local organizations means Temple will help diverse communities address the challenges facing the Philadelphia region, other metropolitan areas and the Commonwealth of Pennsylvania.

TEMPLE'S RISE AS A GLOBAL INSTITUTION BEGAN DECADES AGO WITH THE OPENING OF TWO INTERNATIONAL CAMPUSES, IN ROME AND TOKYO. TODAY, THE UNIVERSITY OFFERS HUNDREDS OF TEACHING, RESEARCH AND SERVICE EXPERIENCES AROUND THE WORLD. THE RESULT: TEMPLE PEOPLE HAVE A GLOBAL PERSPECTIVE AND THE ABILITY TO EXCEL IN AN INCREASINGLY INTERCONNECTED WORLD.

Funds from *Access to Excellence* support many of Temple's international initiatives, from longstanding campuses to innovative research and community programs worldwide. For example, private philanthropy has been central to the growth of the Beasley School of Law's groundbreaking Rule of Law programs in Beijing, which introduce American and international legal practices to Chinese judges, prosecutors, government officials and other legal professionals. Campaign funds, augmented by a major naming gift from Dennis Alter, EDU '66, also helped to complete Alter Hall in 2008, providing the Fox School of Business with additional space for top-ranked international programs and for graduates known for their global mindset.

To help students pursue diverse international experiences, in 2007 Temple President Ann Weaver Hart and her husband, Randy, established a fund through *Access to Excellence* to defray the cost of a first passport for freshman and transfer students planning to study abroad. Today, more than 1,000 Temple students per year participate in international study and exchange programs in Brazil, France, India and more than a dozen other countries, an 80 percent increase since 2001. In 2009, five Temple students won prestigious Fulbright fellowships to study, conduct research or teach English abroad—the second highest yearly total in Temple history.

Temple fosters
global perspectives
on campus
and around
the world.



Total number of gifts
502,819





“Temple researchers are always pushing the boundaries of new knowledge, and the result is research that truly improves the lives of individuals around the world, bolsters the regional economy and sets the stage for future discovery.”

Lisa Staiano-Coico
Provost

Campaign gifts to Temple’s schools and colleges help to maintain educational partnerships with more than 80 institutions around the world. Some of the newest include a dual bachelor’s-master’s degree program with six leading Taiwanese universities and a student and faculty exchange with the Future University of Egypt in the areas of engineering, dentistry and pharmacy. New Temple scholarships, funded through *Access to Excellence*, support art history students studying in Rome, architecture students exploring modern structures in Japan and many other international experiences.

Temple’s Philadelphia-area campuses attract students, scholars and researchers from around the world. In 2009, more than 1,500 international students were enrolled at Temple. They bring varied experiences to the classroom and, through international student groups and events, a rich cultural life to the university. The result is an environment where students exchange ideas, challenge assumptions and gain a richer perspective on today’s global issues. A 2008 gift to the campaign established the Leonard and Arlene Swidler Chair of Interreligious Dialogue in the College of Liberal

Arts, encouraging a deeper discussion among people of different faiths at Temple and beyond on ways to reduce conflict and increase mutual understanding and trust.

Temple’s global commitment will continue to boost international teaching, learning, research and community outreach. Graduates will be exposed to an intellectual framework that enables them to analyze contemporary political, economic and scientific events and understand their impact at the local, national and international levels. The university will expand education and study-abroad possibilities for students and enhance faculty opportunities for international engagement and experience. Temple will continue to institute best teaching practices for accelerating the global competency of students so they can communicate across national borders and cultures.

EXPLORATION AND DISCOVERY THAT IMPACT PEOPLE AND COMMUNITIES ARE AT THE HEART OF TEMPLE'S ACADEMIC MISSION. ADVANCED RESEARCH ALSO PROVIDES STUDENTS WITH EDUCATIONAL EXPERIENCES THAT WOULD NOT OTHERWISE BE POSSIBLE. OVER THE DURATION OF THE CAMPAIGN, 2002 TO 2009, ANNUAL FUNDING FOR SPONSORED RESEARCH GREW FROM \$57.6 MILLION TO \$88.8 MILLION.

Temple supports scholars and scientists as they hunt for solutions to today's toughest problems, cross disciplinary boundaries and collaborate with industrial and academic partners. Faculty members can take advantage of the university's \$50,000 seed grants to jumpstart interdisciplinary research and creative works. At the School of Medicine, the Faculty Development Research Award funds the work of junior faculty members who can then seek outside funding for proven research ideas.

Access to Excellence funds—more than \$66 million was raised for research during the campaign—are providing Temple faculty and students with additional resources to improve what has come before in hundreds of fields. Established with a gift from John Livingstone, SBM '49, in 2004, the Library Prize for Undergraduate Research encourages the development of library research techniques. In the School of Pharmacy's Center for Drug Discovery, dedicated in 2009, scientists streamline the process for bringing new medicines to market. Private campaign gifts were critical to the Sbarro Institute for Cancer Research and Molecular Medicine in the College of Science and Technology, which launched new projects exploring the application of molecular and genetic therapeutics to a wide range of diseases.

Temple generates
new knowledge
and understanding
to transform millions
of lives.



NEW RESEARCH AND LEARNING SPACE
975,000 SQUARE FEET





As Temple University reaches even higher in the years ahead, students, faculty and others who are tenacious, creative and ready to take on any challenge will continue to be at the core of what makes us great.”

Bret Perkins, SBM '91

President, Temple University Alumni Association

At Temple, faculty and student research thrives in an environment brimming with innovative ideas. The Simmy and Harry Ginsburg Health Sciences Library supports interdisciplinary collaboration that is central to advancing discovery and improving clinical care. The library was named through a gift to Temple's largest capital project ever, the Medical Education and Research Building. The Public Health Law Research initiative at the Beasley School of Law, funded by one of the largest single gifts to *Access to Excellence*, explores legal and regulatory solutions to epidemics, chronic diseases and other pressing health challenges.

Access to Excellence campaign funds also support new thinking in the liberal arts and creative endeavors on campus. Taking a fresh tack in the study of military history and diplomatic history, Temple's Center for the Study of Force and Diplomacy brings together academics and diplomatic personnel to explore the complex interrelationship between the two. A bequest made in 2007 will support the George and Joy Abbott Center for Musical Theater, through which professional playwrights, actors, directors and designers will share their experience directly with Temple students.

With research as a main component of *Access to Excellence*, campaign funds are transforming innovative ideas and mountains of data into practical solutions that improve lives. Temple's Center for Obesity Research and Education has gained national acclaim since it opened in 2006 for its investigations into the causes, treatment and prevention of obesity. Initiated in 2004, the pioneering Arts and Quality of Life Research Center investigates how the arts can address the emotional needs of cancer patients. Continuing foundation support fosters a long-term, multi-million-dollar research effort by Laurence Steinberg, Laura H. Carnell Professor of Psychology in the College of Liberal Arts, to investigate juvenile justice reform.

Building on its many successes in advanced exploration and investigation, Temple will continue to move aggressively to increase sponsored research at the Health Sciences Center and across the university, encourage innovation by strengthening graduate education, support investigators early in their careers, supplement participation in scholarly conferences and expand opportunities for undergraduate research and creative expression.

TEMPLE UNIVERSITY HAS REACHED A NEW LEVEL OF DISTINCTION. THE SUCCESS OF ACCESS TO EXCELLENCE DEMONSTRATES THAT A CULTURE OF PRIVATE PHILANTHROPY BY TEMPLE SUPPORTERS HAS TAKEN ROOT AND WILL CONTINUE TO GROW. THE ACADEMIC STRATEGIC COMPASS AND TEMPLE 20/20 FRAMEWORK EXEMPLIFY THE UNIVERSITY'S ONGOING DRIVE TO IMPROVE, TO STRENGTHEN AND TO SERVE COMMUNITIES WORLDWIDE IN THE 21ST CENTURY.

Temple's future has never been brighter, and that optimism is sustained by a remarkable university community. Today, new and higher levels of participation are evident among alumni on Temple's campuses, online and at university-sponsored events in Philadelphia and around the world. Regional alumni clubs provide graduates across the United States with a chance to reconnect to Temple. A new online community—visited by more than 400,000 alumni and students since its 2007 launch—provides interactive tools to connect with each other.

More Temple graduates also have signed on to mentor and advise current students, lend their expertise to schools and colleges, and serve on the university's volunteer boards and committees, ensuring that the next generation of Temple students is prepared for lasting success.

With the Academic Strategic Compass as a guide, Temple will expand opportunities for students to excel in the classroom, raise sponsored research and encourage innovation and exploration in every school and college. The university also will broaden the scope of community partnerships in the region and across

The university will reach new levels of **achievement** in the 21st century.



Temple University

INSPIRE MILLIONS TO SUCCEED





Pennsylvania and will increase opportunities for international teaching, learning, research and community outreach experiences. The result will be a Temple community of students, artists, scholars and scientists who will enhance—in real, measurable and ever-increasing ways—the lives of people around the world.

Temple 20/20 supports and expands this academic and intellectual vision. To support the Academic Strategic Compass, Temple will build new facilities for learning, living and recreation. Broad Street will experience the greatest concentration of changes, culminating in a vibrant corridor that thrives as a rich, around-the-clock urban environment. A new residential tower for students, with ground-floor retail spaces, has already begun at Broad and Oxford streets to accommodate the increased demand for student housing. By extending the front façade of Pearson and McGonigle halls, the university will add more space for student recreation and intramural athletics. A new flagship library and learning facility, at the intersection of Broad Street and Polett Walk, will rise across from the Baptist Temple at the historic heart of campus.

Throughout Main Campus, an updated streetscape, including trees, signage, lighting and site furnishings will slow vehicular traffic and encourage more walking and gathering by students. The university will create intimate green spaces by consolidating existing open areas and connecting them through improved pedestrian corridors. Situated between Liacouras Walk and 12th Street, a new signature open space will be at the campus core enhancing the quality of life and learning experience for future generations of students.

Within a decade, Main Campus will be an area rich in amenities and possibilities, and a vibrant destination for the entire Philadelphia region. This ongoing transformation is the most visible manifestation of Temple's continuing growth as a center for scholarship and discovery, impact and opportunity. They will come to Temple's campuses, online hubs or international locations—to learn, discover, exchange ideas and amplify new knowledge. They will inspire millions and be inspired by those exceptional individuals who comprise the remarkable global community of Temple. Their vision—Temple's vision—will transform countless lives around the world. ■



Institutional Advancement
Sullivan Hall, Suite 100
1330 Polett Walk
Philadelphia, PA 19122

PHONE: 215-204-1001
E-MAIL: giving@temple.edu
WEB: myowlspace.com/accesstoexcellence